

Wrights



18 Pavilions Court, Windsor Road
Trowbridge BA14 0FY

Monthly Rental Of £750



Wrights Residential, 24 Fore Street, Trowbridge, BA14 8ER
Phone: 01225 755553, Email: enquiries@wrightsresidential.co.uk
www.wrightsresidential.co.uk

One bedroom ground floor apartment

Electric heating

Open plan kitchen/diner

Double bedroom

Stunning bathroom with four piece suite

Off road parking

Unfurnished

Available from late March

This spacious one bedroom ground floor apartment is situated within the popular Pavilions Court on the outskirts of Trowbridge, close to Trowbridge retail park. The apartment offers an open plan kitchen/living area and a high quality bathroom with shower enclosure and bath. Further features include modern electric heating, double glazing and allocated parking for one vehicle. Available from late March unfurnished.

The property comprises

Council tax

The property is currently in council tax band A.

Ground floor

Energy Performance

Current energy rating: 74 - C

Entrance Hall

With wood laminate flooring and cupboard housing hot water cylinder and space/plumbing for washing machine.

Services

Mains electricity, water and drainage are connected. The property is heated by wall mounted electric heaters. Please note that the Agent has not tested any appliances.

Open plan Kitchen/Living room 21' 9" x 17' 3" (6.64m x 5.25m) max

With wood laminate flooring, a range of eye level and base units, worktops with tiled splashbacks, integrate electric oven and ceramic hob with extractor hood over, integrated fridge/freezer, one and a half bowl sink/drain unit, wall mounted modern electric heater and double glazed window to the rear aspect.

Bedroom 17' 1" x 12' 8" (5.21m x 3.87m)

With wall mounted modern electric heater and double glazed window to the rear aspect.

Bathroom

With tiled flooring, fully tiled walls, four piece suite comprising bath, shower enclosure with mains fed thermostatic shower with rain head and separate shower attachment, hand basin and W.C, heated towel rail, LED illuminated mirror and extractor fan.

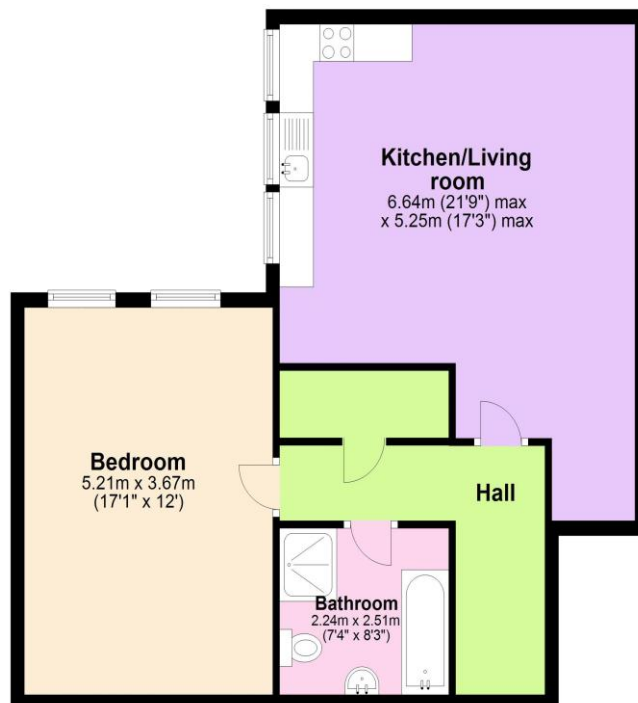
Parking

Allocated parking for one vehicle and further visitor spaces available.



Ground Floor

Approx. 63.7 sq. metres (685.6 sq. feet)



Total area: approx. 63.7 sq. metres (685.6 sq. feet)